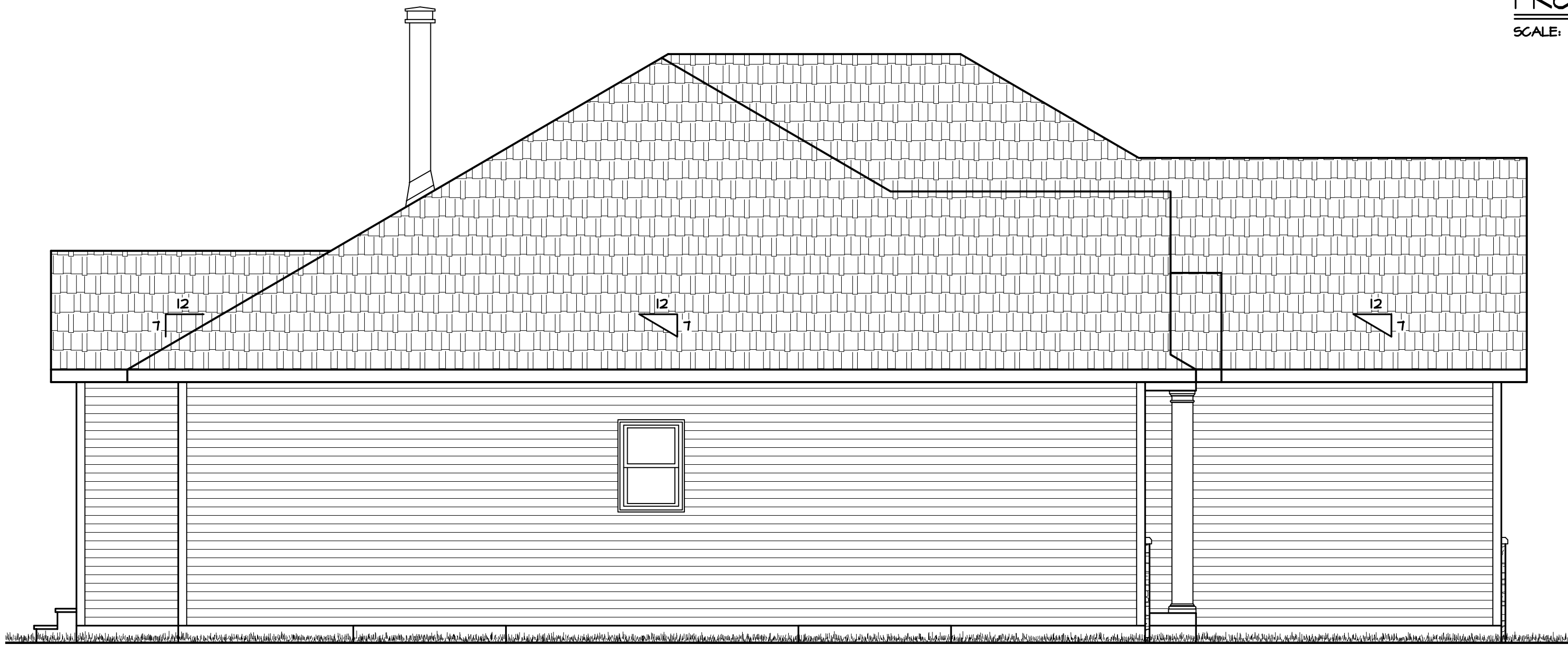


FRONT ELEVATION
SCALE: 1/4" = 1'-0"



LEFT ELEVATION
SCALE: 1/4" = 1'-0"



RIGHT ELEVATION
SCALE: 1/4" = 1'-0"



REAR ELEVATION
SCALE: 1/4" = 1'-0"

THIS DRAWING IS THE PROPERTY OF
BRAUN BUILDING CENTER
REPRODUCTION OR USE OF THIS PLAN
WITHOUT CONSENT IS PROHIBITED.

DRAWN BY
TTP

DATE:
5-4-2022

REVISION BY
5-18-2022 TTP

DISTRIBUTORS - FABRICATORS
3303 MEASHA AVENUE
WILMINGTON, NC 28403
PH: 910 - 682 - 0149
FAX: 910 - 682 - 0394

BUILDING
CENTER

BRAUN

TLG SPEC. # 1-22 LEDGEVIEW
TLG HOLDINGS, LLC

-NOTE-
ALTHOUGH EVERY EFFORT HAS BEEN
MADE IN PREPARING THESE PLANS AND
SPECIFICATIONS, THE CONTRACTOR MUST
CHECK ALL DETAILS AND DIMENSIONS
BE RESPONSIBLE FOR THE SAME.

DRAWING
NUMBER
1

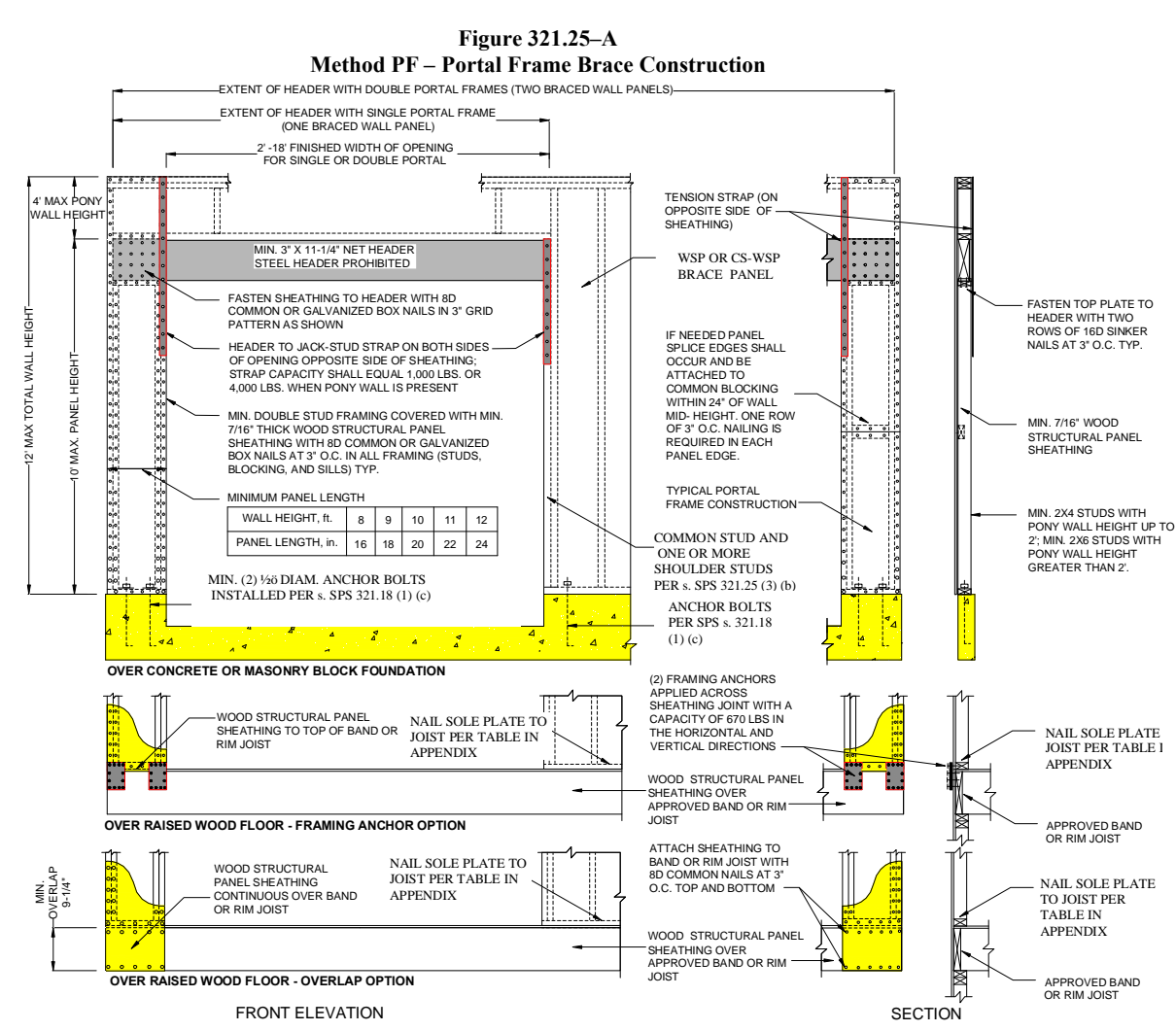
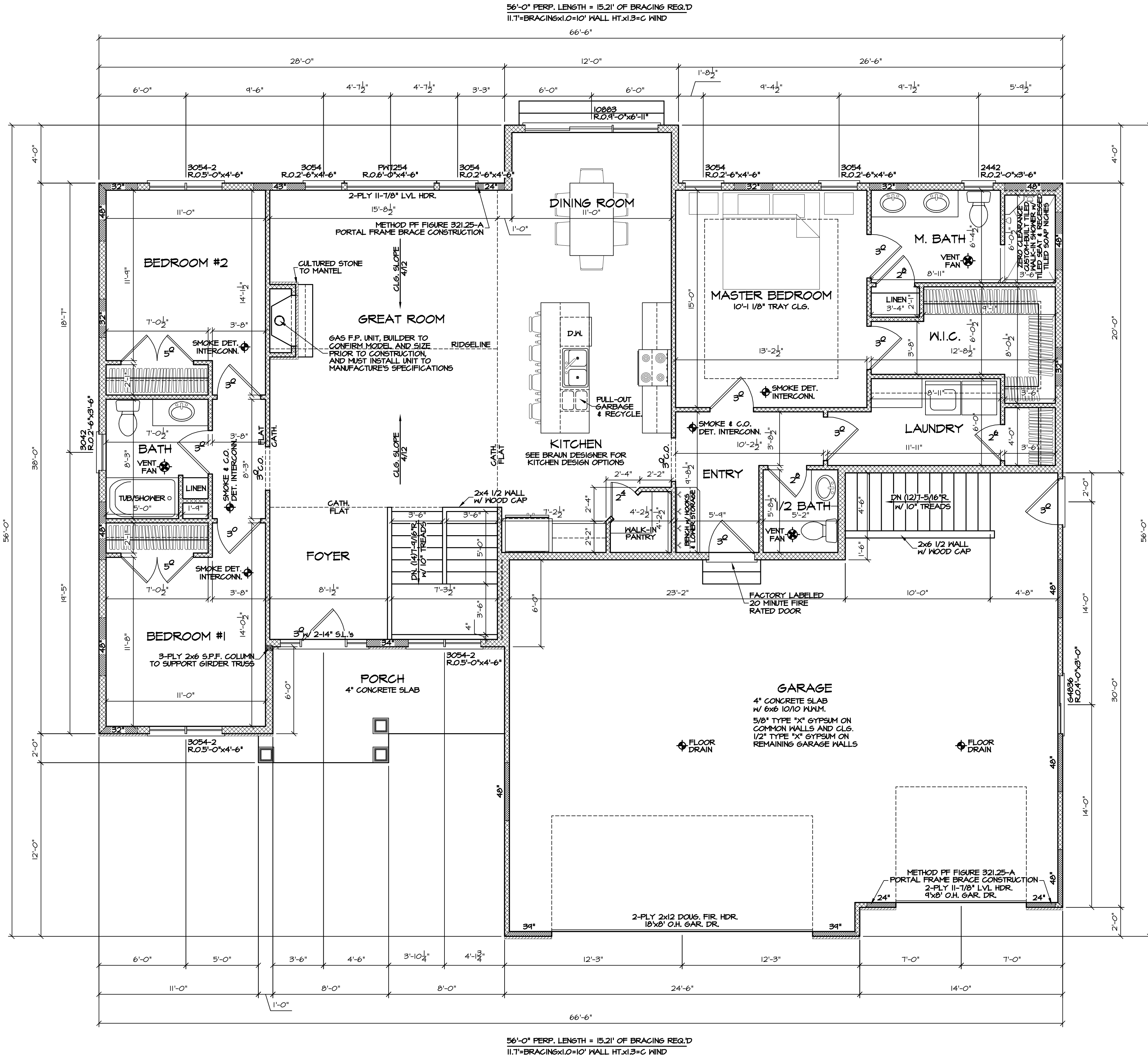
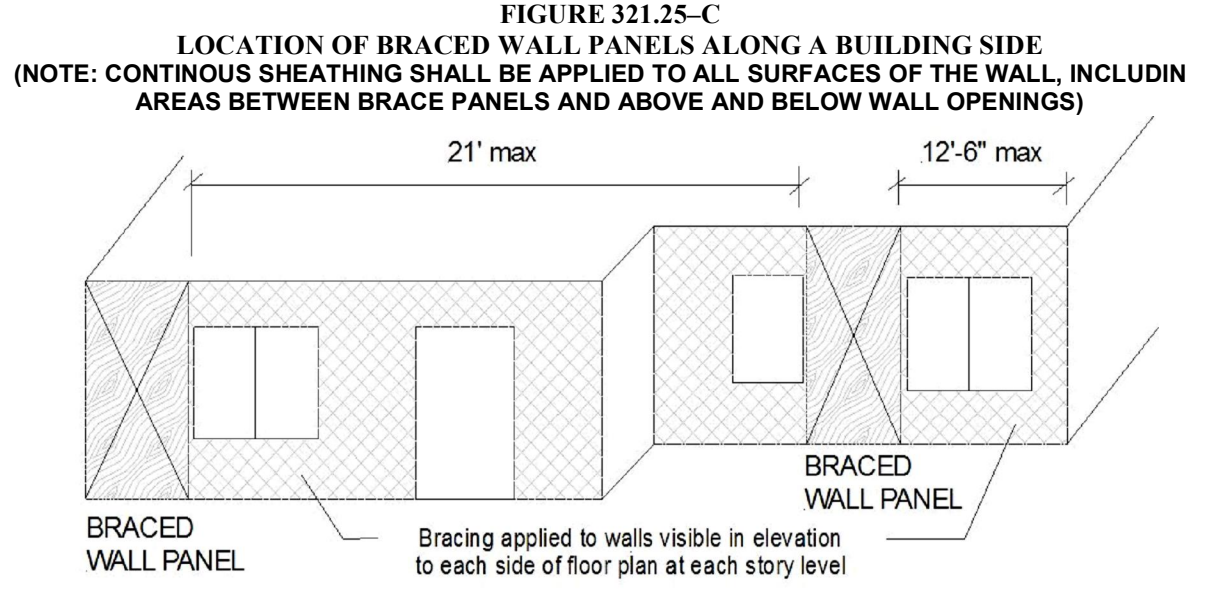


Table 321.25-H
MINIMUM WIDTHS OF METHOD CS-WSP AND CS-SFB BRACED WALL PANELS

Maximum Opening Height Adjacent to Braced Wall Panel	Minimum Length of Braced Wall Panel (inches)
Up to 6'0"	24
Up to 6'6"	32
Up to 7'0"	40
Up to 7'6"	48
Up to 8'0"	56
Up to 8'6"	64
Up to 9'0"	72



FIRST FLOOR PLAN
SCALE: 1/4" = 1'-0"
1224 FINISHED SQUARE FEET
9'-1 1/8" WALL HEIGHT
10'-3 1/4" GARAGE WALL HT.

ALL WINDOWS ARE DESIGNED AND SPECIFIED AS ALLIANCE WINDOWS

THIS DRAWING IS THE PROPERTY OF BRAUN BUILDING CENTER. REPRODUCTION OR USE OF THIS PLAN WITHOUT CONSENT IS PROHIBITED.

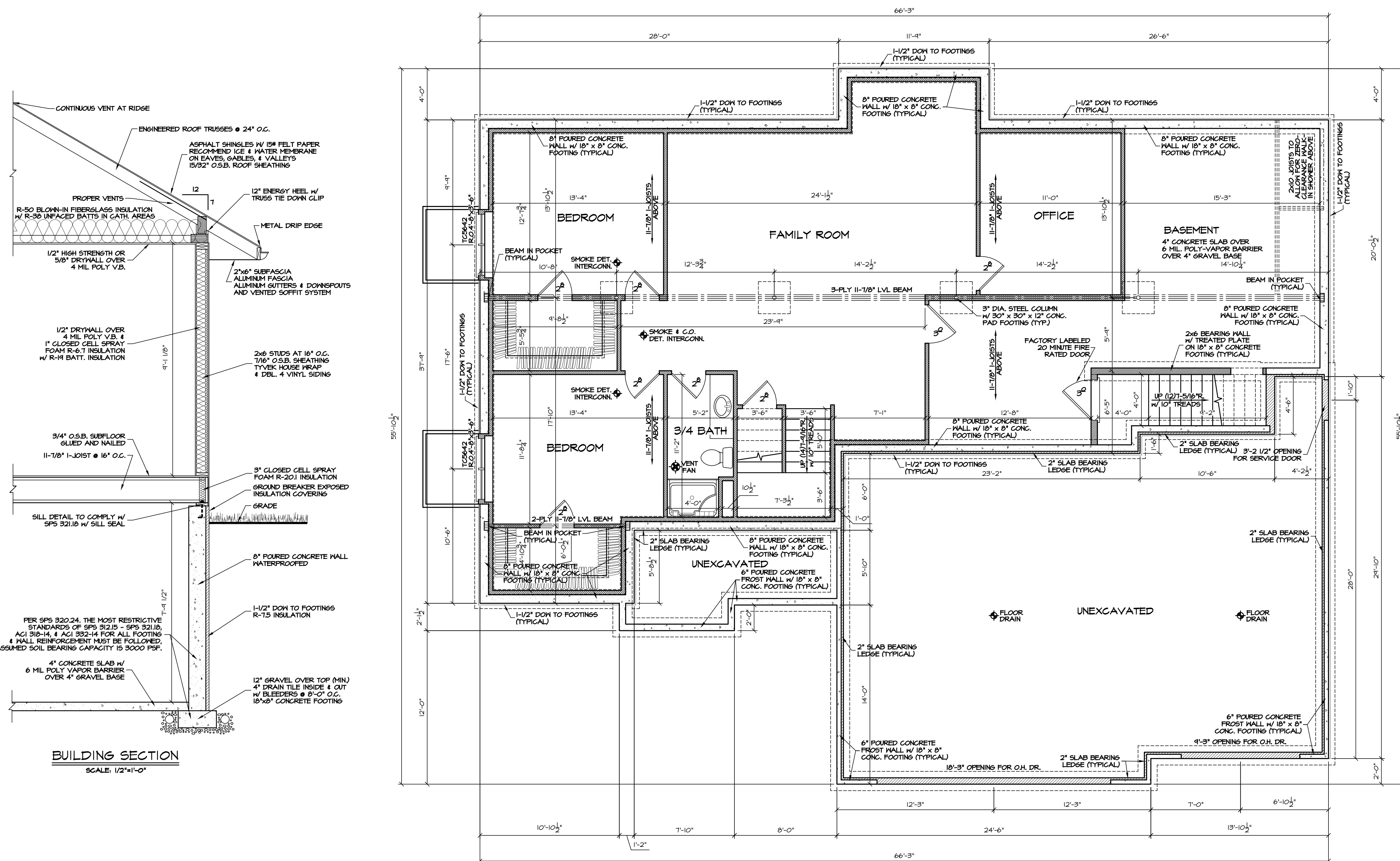
ALL LVL HEADERS AND 1-JOISTS ARE DESIGNED AT MINIMUM AS TRUSS JOIST (1/4" MICRO LAM LVL & TRUSS JOIST T.J. 210 1-JOISTS W/ L/600 MINIMUM LIVE LOAD DEFLECTION, UNLESS OTHERWISE SPECIFIED AS STRONGER ON ESTIMATE OR PLAN.

ROOF TRUSS SPEC.'s
ROOF LOAD: DESIGNED FOR ZONE 2
LOADING: TCDL = 30#
TCDL = 7#
BCDL = 10#
SPACING: 24" O.C. (UNLESS NOTED ON TRUSS PLAN)
DURATION: 1.15 %
DEFLECTION: L/240 MINIMUM
ROOF PITCH: 7/12
HEEL HEIGHT: 12"
O.H.'s (INCLUDING 2x6 FASCIA): 24" EAVE & 12" GABLE

- FLOOR PLAN GENERAL NOTES
- EXTERIOR FRAMED WALLS ARE DRAWN AT 4" AND 6". "EXTERIOR DIMENSIONS INCLUDE 1/2" SHEATHING". INTERIOR FRAMED WALLS ARE DRAWN AT 3 1/2" & 5 1/2".
 - A MINIMUM OF A SINGLE COMMON STUD AND DOUBLE SHOULDER STUDS MUST BE USED FOR ALL HEADERS GREATER THAN 6'-0" IN LENGTH.
 - BOTTOM OF WINDOW AND DOOR HEADERS ARE 6'-10" ABOVE THE SUBFLOOR UNLESS OTHERWISE NOTED.
 - ALL HEADERS ABOVE OPENINGS IN FRAMED WALLS ARE 2-PLY 2x10'S UNLESS OTHERWISE NOTED ON ESTIMATE.
 - CONTRACTOR TO VERIFY ALL CATHEDRAL, COFFERED, VAULTED, RAISED HEIGHT, AND TRAY CEILINGS WITH OWNER PRIOR TO TRUSS CONSTRUCTION.
 - BUILDER TO PROVIDE AN ATTIC SCUTTLE AS NEEDED

BRACED WALL LEGEND

- CS-WSP "CONTINUOUS SHEATHED WSP", 3/8" FOR MAXIMUM 16" O.C. STUD SPACING; 7/16" FOR MAXIMUM 24" O.C. STUD SPACING. FASTENED W/ MIN. 6d COMMON NAIL OR 6d BOX NAIL (2-1/2" LONG x 0.113" DIA), FASTENERS SPACED 6" EDGES, 12" FIELD
- PF "PORTAL FRAME", 12" MAX. HT. REFER TO FIGURE 321.25 (A) FOR MINIMUM PANEL WIDTH, MIN. FASTENERS, & MAX. FASTENER SPACING
- WSP "WOOD STRUCTURAL PANEL", 3/8" FOR MAXIMUM 16" O.C. STUD SPACING; 7/16" FOR MAXIMUM 24" O.C. STUD SPACING. FASTENED W/ MIN. 6d COMMON NAIL OR 6d BOX NAIL (2-1/2" LONG x 0.113" DIA), FASTENERS SPACED 6" EDGES, 12" FIELD
- GS "GYPSUM INSTALLED ON BOTH SIDES OF WALL", 1/2" FOR MAXIMUM 24" O.C. STUD SPACING; FASTENED W/ MIN. 5d COOLER NAILS OR #6 SCREWS, FASTENERS SPACED 1" EDGES, 1" FIELD (INCLUDING TOP AND BOTTOM PLATES)
- LIB "LET-IN BRACING", 1x4 WOOD BRACE (OR APPROVED METAL BRACE INSTALLED PER MANUFACTURER INSTRUCTIONS), 7/16" FOR MAXIMUM 24" O.C. STUD SPACING. FASTENED W/ MIN. 2-6d COMMON NAILS OR 3-6d BOX NAILS (2-1/2" LONG x 0.113" DIA), FASTENERS SPACED PER STUD AND TOP AND BOTTOM PLATES
- DWB "DIAGONAL WOOD BOARDS", 3/4" (1" NOMINAL) FOR MAXIMUM 24" O.C. STUD SPACING FASTENED W/ MIN. 2-6d BOX NAILS (2-1/2" LONG x 0.113" DIA), FASTENERS SPACED PER STUD AND TOP AND BOTTOM PLATES
- COMMON WALLS OF O.S.B. 1/2" OR GYPSUM WALLBOARD APPLIED TO BOTH SIDES, FOLLOW MINIMUM FASTENER TABLE OR MANUFACTURE SPEC.'s



FOUNDATION PLAN

SCALE: 1/4" = 1'-0"
1314 FINISHED SQUARE FEET
8'-0" POURED BASEMENT

ALL WINDOWS ARE DESIGNED AND SPECIFIED AS ALLIANCE WINDOWS

THIS DRAWING IS THE PROPERTY OF
BRAUN BUILDING CENTER
REPRODUCTION OR USE OF THIS PLAN
WITHOUT CONSENT IS PROHIBITED.

ALL LVL HEADERS AND I-JOISTS ARE
DESIGNED AT MINIMUM AS TRUSS JOIST
MICROLLAM LVL & TRUSS JOIST TJI 2
I-JOISTS W/ L/600 MINIMUM LIVE LOAD
DEFLECTION, UNLESS OTHERWISE SPECIFIED
AS STRONGER ON ESTIMATE OR PLAN

FOUNDATION GENERAL NOTES

1. **CONCRETE CONTRACTOR & BUILDER ARE RESPONSIBLE TO VERIFY SOIL CONDITIONS AND FOLLOW STANDARDS PER SPS 320.24. THE MOST RESTRICTIVE STANDARDS OF SPS 312.15, SPS 321.18, ACI 318-14, & ACI 332-14 FOR ALL FOOTING & WALL REINFORCEMENT, IF NEEDED, MUST BE FOLLOWED.**
2. **ADJUSTED SOIL BEARING CAPACITY IS 3000 PSF. FOOTING SIZES MUST BE ADJUSTED FOR VARYING SOIL CONDITIONS.**
3. **EXTERIOR FRAMED WALLS ARE DRAWN AT 4" AND 5".
"EXTERIOR DIMENSIONS INCLUDE 1/2" SHEATHING"
"INTERIOR FRAMED WALLS ARE DRAWN AT 3 1/2" & 5 1/2".**
4. **ALL HEADERS ABOVE OPENINGS IN FRAMED WALLS ARE 2-PLY 2x10's UNLESS OTHERWISE NOTED ON ESTIMATE.**
5. **DIMENSIONS ON THE FOUNDATION PLAN INCLUDE ALL BRICK LEDGES AND CONCRETE SLAB BEARING LEDGES. IT IS THE CONTRACTOR'S RESPONSIBILITY TO ACCURATELY MEASURE AND VERIFY ALL LEDGE AND DIMENSION LOCATIONS.**
6. **THE FOLLOWING ITEMS ARE TO BE LOCATED IN THE FOUNDATION BY THE CONTRACTOR:**

FURNACE	FLOOR DRAIN
ELECTRICAL SERVICES	WATER HEATER
SUMP PIT & PUMP	WATER TREATMENT EQUIP.
7. **BUILDER TO VERIFY BSMT. WINDOW LOCATION WITH OWNER PRIOR TO CONSTRUCTION, AND PROVIDE HEADERS AT BASEMENT WINDOWS WHERE NEEDED.**
8. **POURED CONCRETE FOOTINGS TO BEAR ON UNDISTURBED SOIL BELOW THE FROST LINE.**
9. **STRAIGHT FOUNDATION WALLS 40'-0" AND LONGER ARE TO HAVE FLAT SLABS. FOUNDATION GRADING VARIES WITH WALL LENGTH BUT CANNOT EXCEED 4'-0" ON CENTER.**